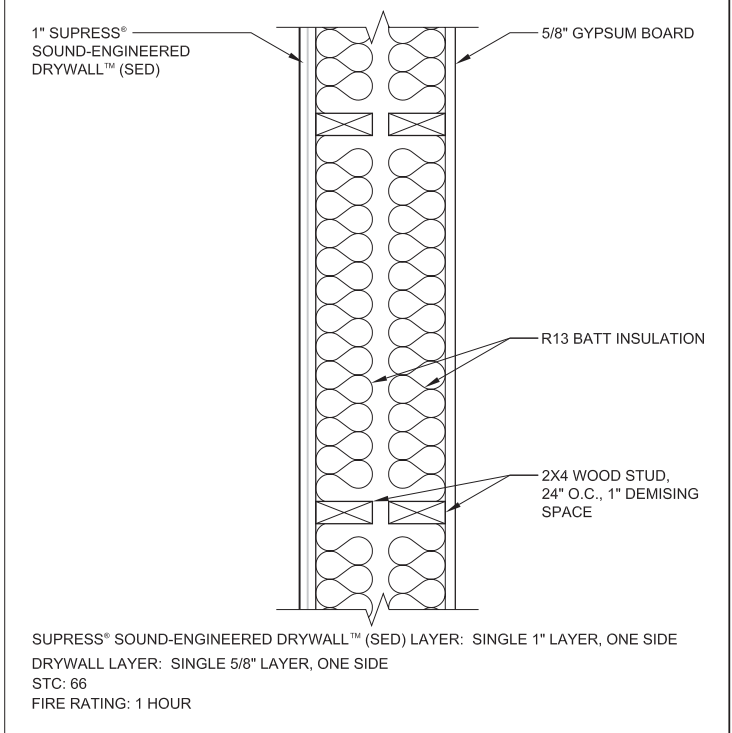
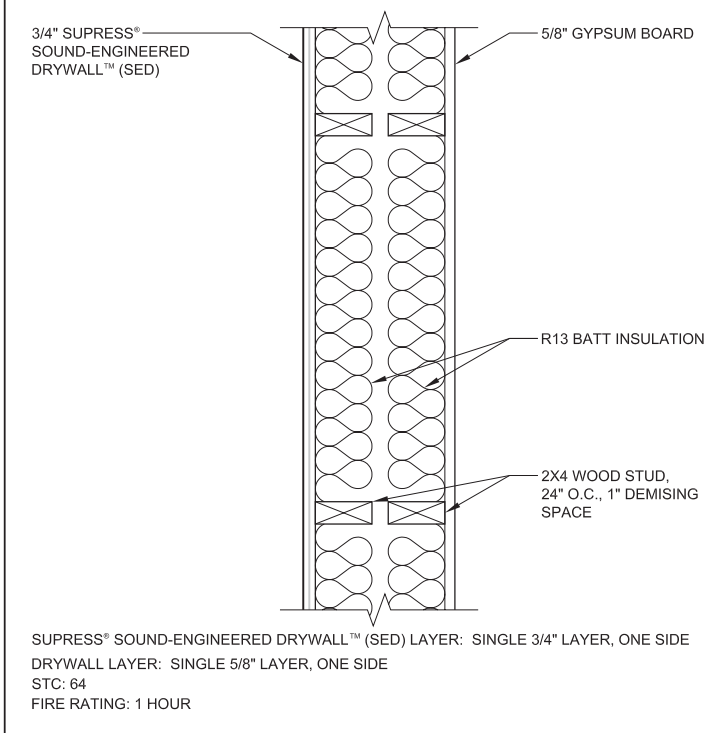
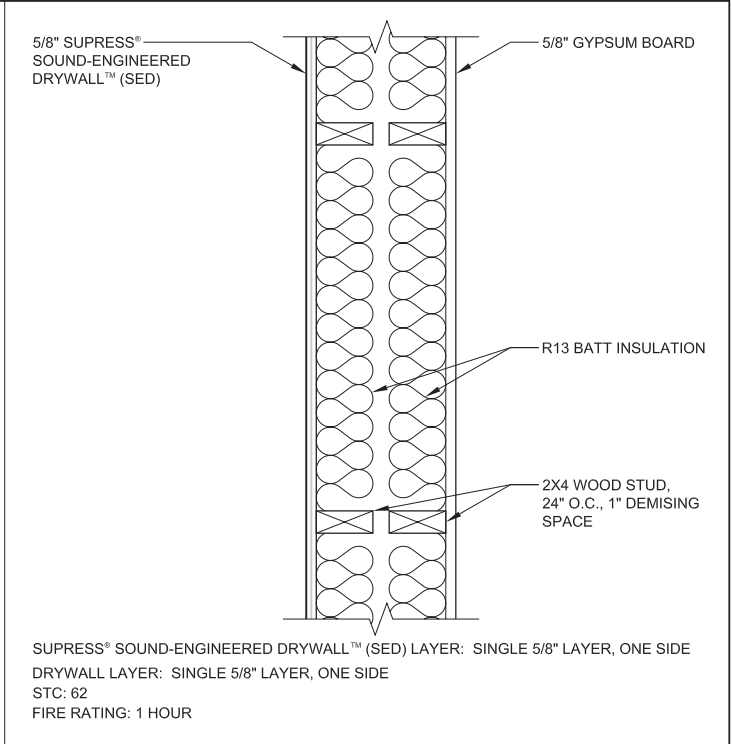
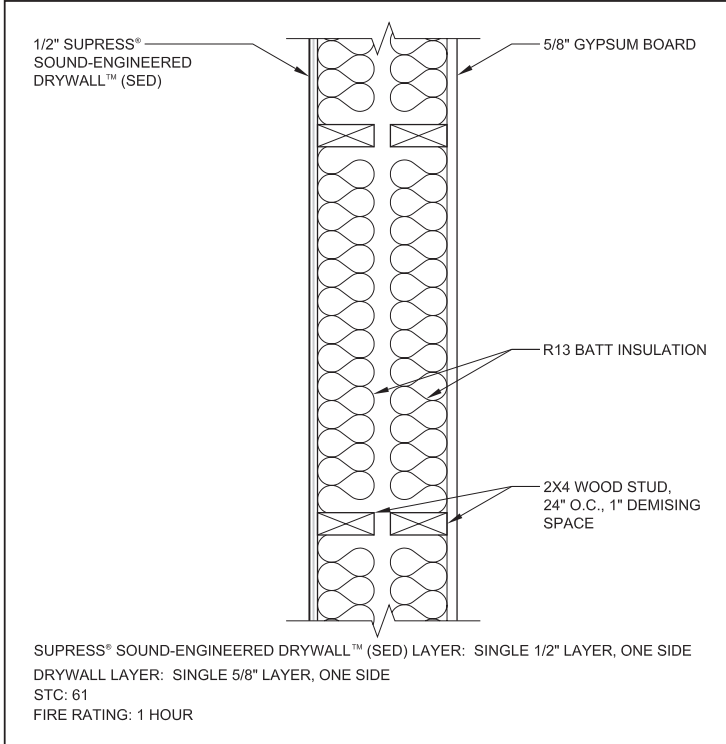


SUPRESS[®]

SOUND-ENGINEERED

WALL ASSEMBLY DRAWINGS: NEW CONSTRUCTION - WOOD STUDS

Supress[®] Sound-Engineered Drywall[™] on Double Wood Studs



SED-NC-DW 01/07

Copyright © 2005-2007 Supress Products, LLC. All rights reserved. Product specifications subject to change without notice. See www.supressproducts.com for the most up-to-date information. Supress and the Supress logo are Registered Trademarks of Supress Products, LLC. Sound-Engineered, Sound-Engineered Drywall, Sound-Engineered Plywood are Trademarks of Supress Products, LLC. Worldwide Patents Pending.

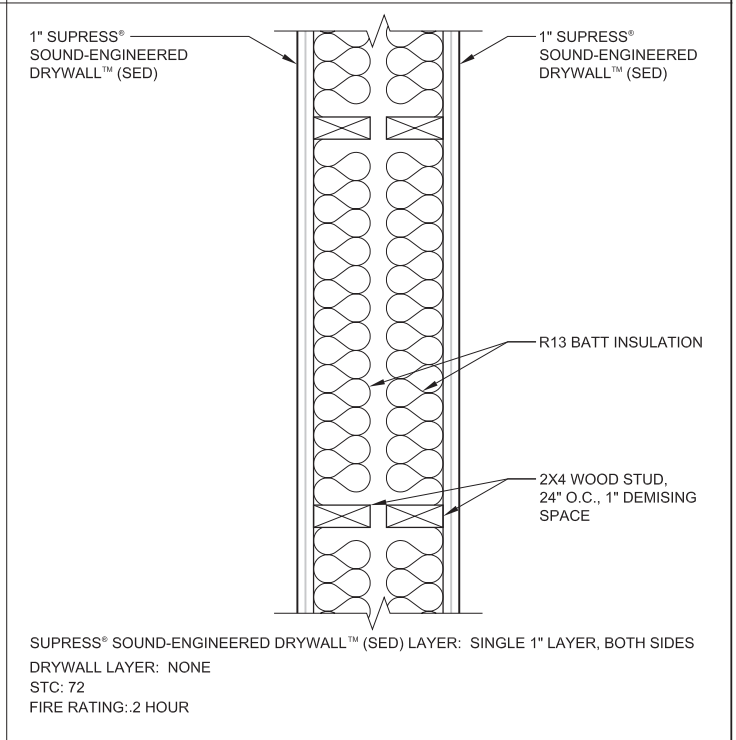
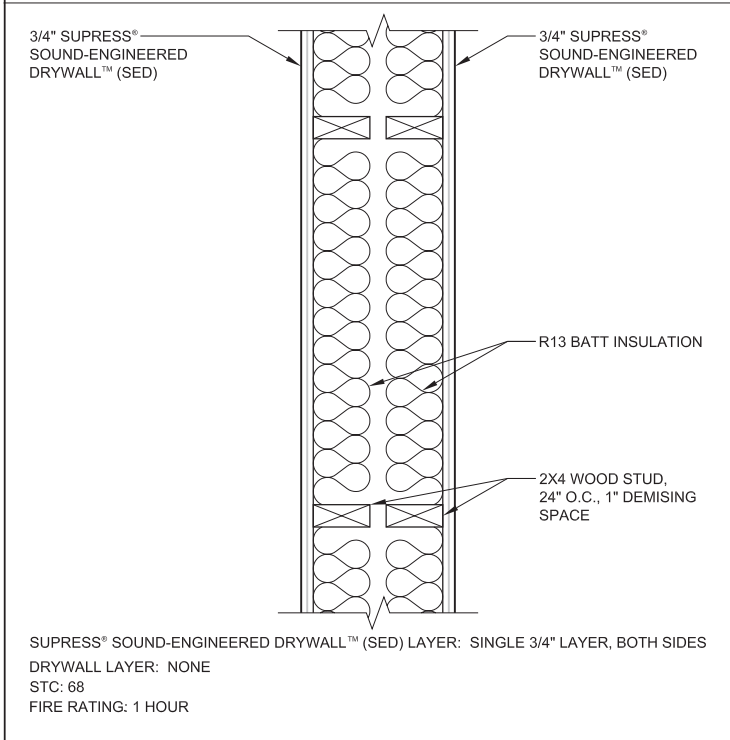
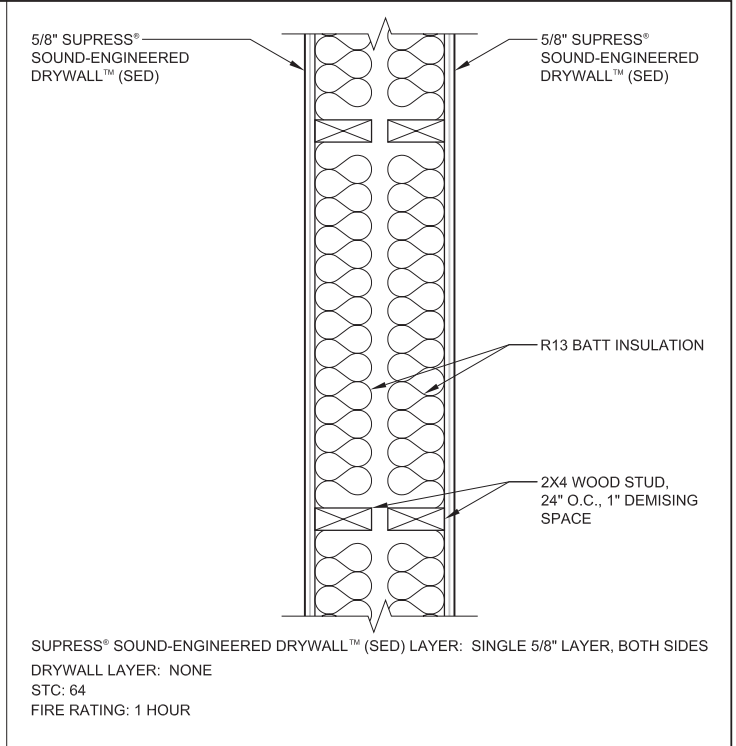
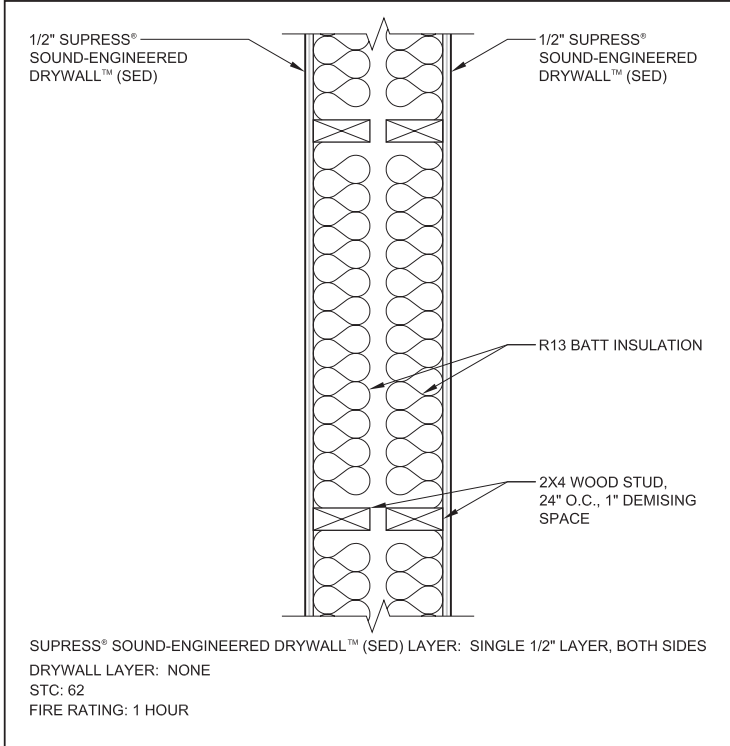
WWW.SUPRESSPRODUCTS.COM | 800-456-4061

SUPRESS[®]

SOUND-ENGINEERED

WALL ASSEMBLY DRAWINGS: NEW CONSTRUCTION - WOOD STUDS

Supress[®] Sound-Engineered Drywall[™] on Double Wood Studs, continued



SED-NC-DW 01/07

Copyright © 2005-2007 Supress Products, LLC. All rights reserved. Product specifications subject to change without notice. See www.supressproducts.com for the most up-to-date information. Supress and the Supress logo are Registered Trademarks of Supress Products, LLC. Sound-Engineered, Sound-Engineered Drywall, Sound-Engineered Plywood are Trademarks of Supress Products, LLC. Worldwide Patents Pending.