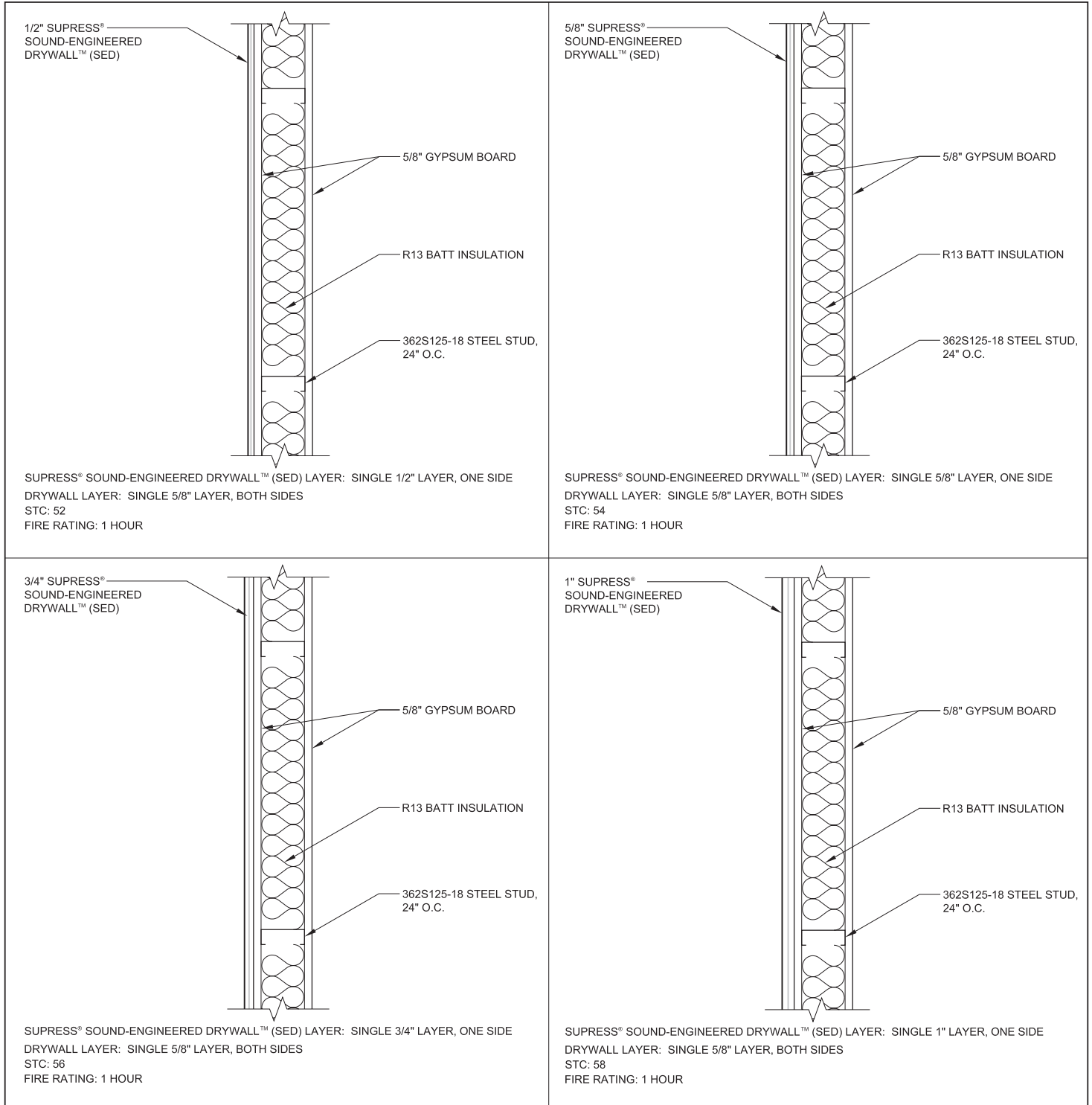


# SUPRESS<sup>®</sup>

## SOUND-ENGINEERED

WALL ASSEMBLY DRAWINGS: REMODEL/RENOVATION OF EXISTING WALL - METAL STUDS

### Supress<sup>®</sup> Sound-Engineered Drywall<sup>™</sup> on Single Metal Studs



SED-RR-SM 01/07

Copyright © 2005-2007 Supress Products, LLC. All rights reserved. Product specifications subject to change without notice. See [www.supressproducts.com](http://www.supressproducts.com) for the most up-to-date information. Supress and the Supress logo are Registered Trademarks of Supress Products, LLC. Sound-Engineered, Sound-Engineered Drywall, Sound-Engineered Plywood are Trademarks of Supress Products, LLC. Worldwide Patents Pending.

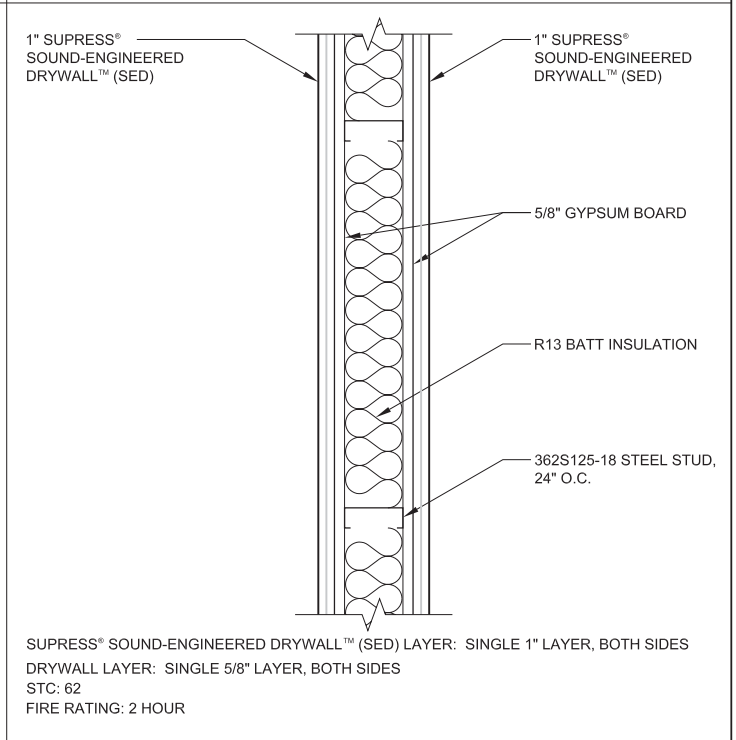
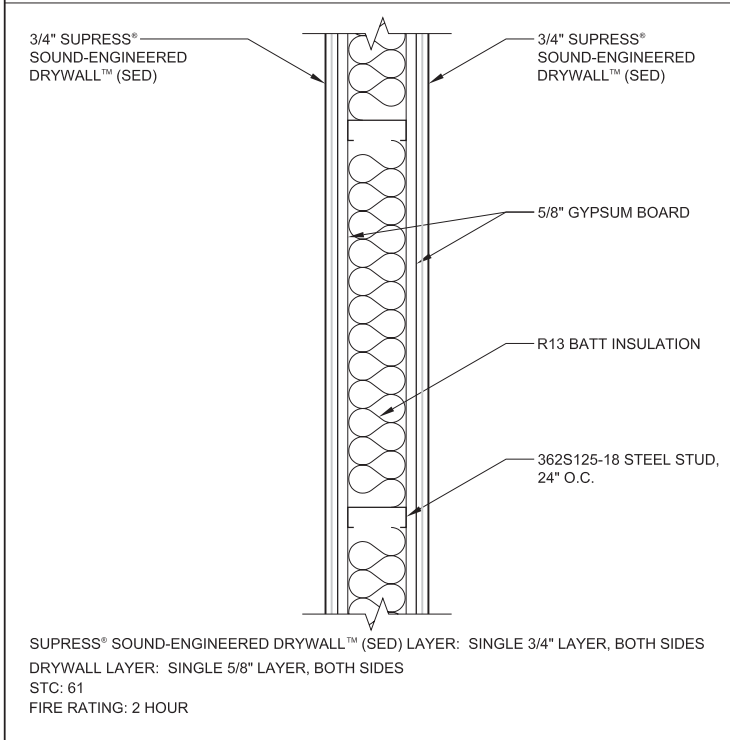
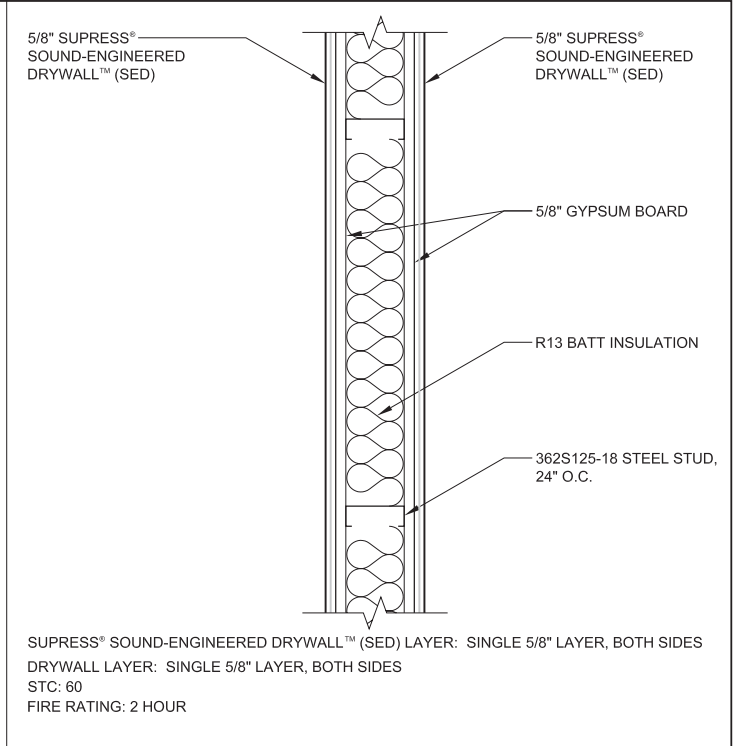
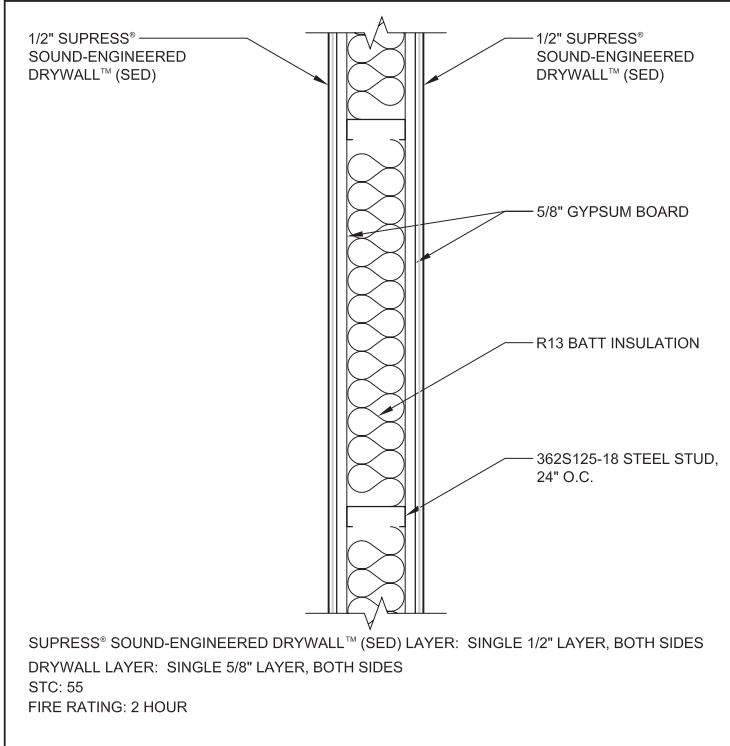
**WWW.SUPRESSPRODUCTS.COM | 800-456-4061**

# SUPRESS<sup>®</sup>

## SOUND-ENGINEERED

WALL ASSEMBLY DRAWINGS: REMODEL/RENOVATION OF EXISTING WALL - METAL STUDS

### Supress<sup>®</sup> Sound-Engineered Drywall<sup>™</sup> on Single Metal Studs, continued



SED-RR-SM 01/07

Copyright © 2005-2007 Supress Products, LLC. All rights reserved. Product specifications subject to change without notice. See [www.supressproducts.com](http://www.supressproducts.com) for the most up-to-date information. Supress and the Supress logo are Registered Trademarks of Supress Products, LLC. Sound-Engineered, Sound-Engineered Drywall, Sound-Engineered Plywood are Trademarks of Supress Products, LLC. Worldwide Patents Pending.